

**ITEM 31. PARKING – LOADING ZONE AND TICKET PARKING – WATERLOO
STREET SURRY HILLS**

TRIM RECORD NO: 2018/039881

RECOMMENDATION

It is recommended that the Committee endorse the reallocation of parking in Waterloo Street, Surry Hills as follows:

- (A) Eastern side, between the points 11.2 metres and 25.6 metres (three car spaces) south of Belmore Lane, as “2P Ticket 8am-6pm, Mon-Fri; Permit Holders Excepted Area 18” and “4P Ticket 6pm-10pm, Mon-Fri; 8am-10pm, Sat, Sun & Public Holidays; Permit Holders Excepted Area 18”;
- (B) Eastern side, between the points 10 metres and 14.3 metres (one car space), and 22 metres and 33.1 metres (two car spaces) south of Foveaux Street, as “2P Ticket 8am-6pm, Mon-Fri; Permit Holders Excepted Area 18” and “4P Ticket 6pm-10pm, Mon-Fri; 8am-10pm, Sat, Sun & Public Holidays; Permit Holders Excepted Area 18”;
- (C) Western side, between the points 14.3 metres and 33.1 metres (three car spaces) south of Foveaux Street, as “2P Ticket 8am-6pm, Mon-Fri; Permit Holders Excepted Area 18” and “4P Ticket 6pm-10pm, Mon-Fri; 8am-10pm, Sat, Sun & Public Holidays; Permit Holders Excepted Area 18”; and
- (D) Western side, between the points 43.1 metres and 62.1 metres (three car spaces) south of Foveaux Street, as “Loading Zone Ticket 8am-6pm, Mon-Fri” and “4P Ticket 6pm-10pm, Mon-Fri; 8am-10pm, Sat, Sun & Public Holidays; Permit Holders Excepted Area 18”.

VOTING MEMBERS FOR THIS ITEM

<i>Voting Members</i>	<i>Support</i>	<i>Object</i>
City of Sydney		
Roads and Maritime Services		
NSW Police – Surry Hills PAC		
Representative for the Member for Sydney		
Representative for the Member for Newtown		

DECISION

BACKGROUND

The City has reviewed parking restrictions in the vicinity of Foveaux Street, Surry Hills and identified locations that need to be updated in accordance with the City's Neighbourhood Parking Policy and to align with other restrictions in the immediate area.

This proposal includes updating the parking restrictions in Waterloo Street, between Belmore Lane and Kippax Street.

COMMENTS

The kerb space on both sides Waterloo Street, Surry Hills where the parking changes are proposed, is currently signposted as a combination of ticket parking, timed permit parking and a Loading Zone.

It is proposed to update the parking restrictions in Waterloo Street, between Belmore Lane and Kippax Street, to better service the adjacent land use. As such, it is proposed to update the existing ticket parking and timed permit parking to "2P Ticket 8am-6pm, Mon-Fri; Permit Holders Excepted Area 18" and "4P Ticket 6pm-10pm, Mon-Fri; 8am-10pm, Sat, Sun & Public Holidays; Permit Holders Excepted Area 18".

It is also proposed to update the existing Loading Zone in Waterloo Street to "Loading Zone Ticket 8am-6pm, Mon-Fri" and "4P Ticket 6pm-10pm, Mon-Fri; 8am-10pm, Sat, Sun & Public Holidays; Permit Holders Excepted Area 18".

The proposed parking changes will align with other restrictions in the immediate area, better service the needs of the adjacent land use, reduce confusion and improve compliance for all road users.

CONSULTATION

The City consulted local residents and businesses in the area. There were 443 letters sent out with no responses supporting the proposal and one response opposing the proposal.

The submission opposing the proposal noted that the changes would reduce the parking available to residents and visitors without parking permits. However the proposed ticket parking will better balance the aim of deterring commuter parking with the needs of households for visitors, carers and tradespeople.

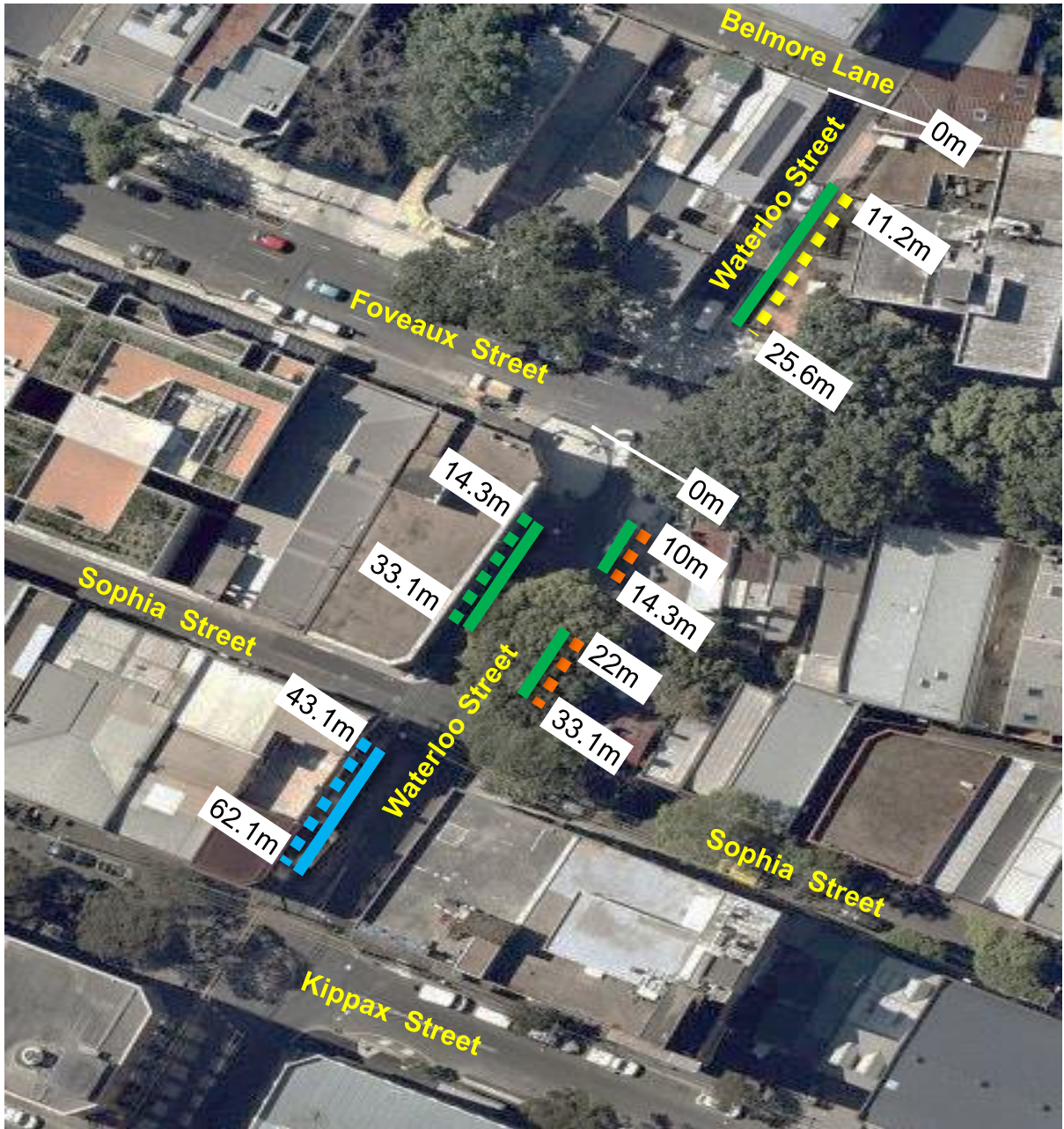
FINANCIAL

Funds are available in the current budget.

Parking – Loading Zone and Ticket Parking – Waterloo Street Surry Hills

Manbir Singh, Senior Traffic Engineer

Waterloo Street, Surry Hills Proposed parking changes



Source: Nearmap – 22 August 2017

Existing

-  "Loading Zone 8.30am-6pm, Mon-Fri"
-  "1P Ticket 8am-6pm Mon-Fri; PHE Area 18" and "4P Ticket 6pm-10pm, Mon-Fri; 8am-10pm, Sat, Sun & Public Holidays; PHE Area 18"
-  "1P 8am-8pm, Mon-Fri; Permit Holders Excepted Area 18"
-  "1P 8.30am-6pm, Mon-Fri"

Proposed

-  "2P Ticket 8am-6pm, Mon-Fri; PHE Area 18" and "4P Ticket 6pm-10pm, Mon-Fri; 8am-10pm, Sat, Sun & Public Holidays; PHE Area 18"
-  "Loading Zone Ticket 8am-6pm, Mon-Fri" and "4P Ticket 6pm-10pm, Mon-Fri; 8am-10pm, Sat, Sun & Public Holidays PHE Area 18"

